

# Occupational Immunisations Fact Sheet

At the start of your UWE course, you will be required to book an immunisation review with Occupational Health. Occupational Health will check your vaccination status against the national standards for work in healthcare. If required, you will be offered the vaccinations which are nationally recommended to protect you and others in a healthcare setting.

**It is important that you attend all these sessions. If you do not or provide evidence as requested, your place on your study programme may be affected.**

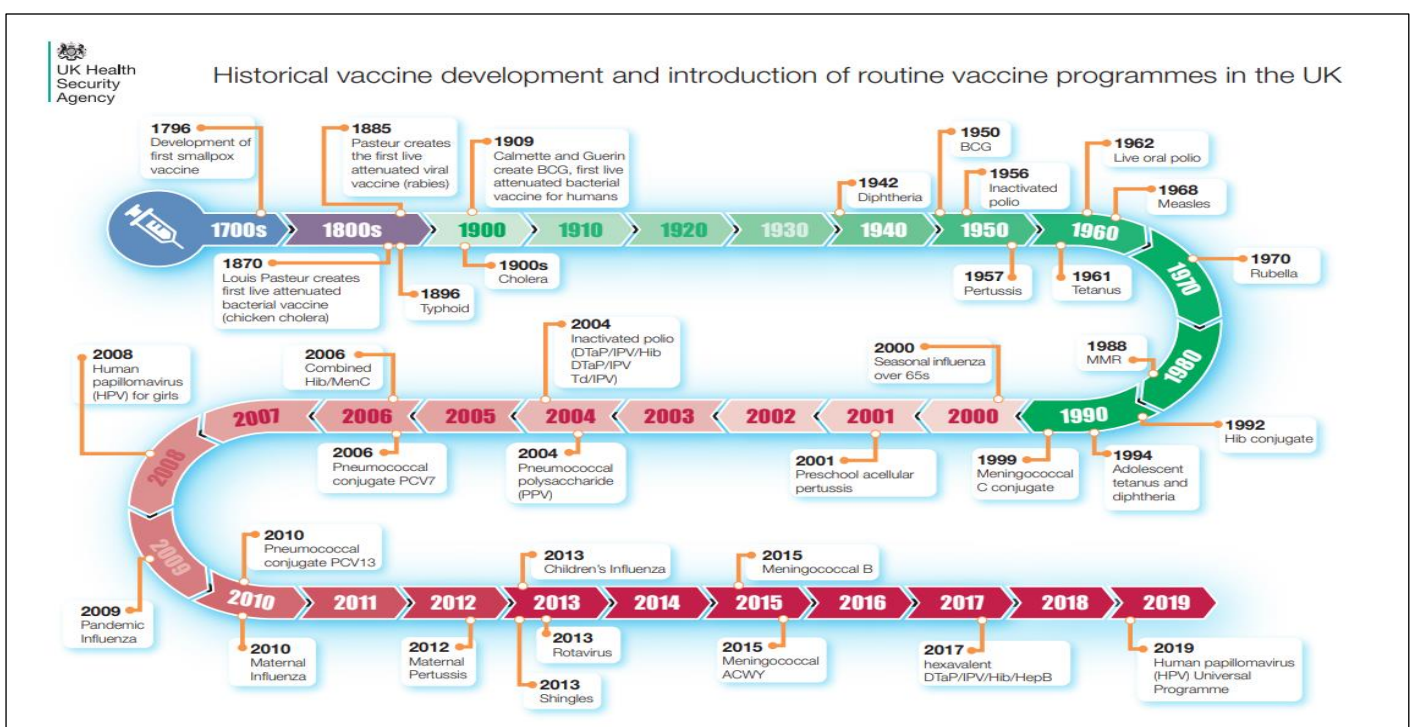
On completion of your Preplacement Health Questionnaire Occupational Health will send you a booking link via your e mail to arrange an Immunisation appointment. **This link is open for 20 days so please arrange as soon as possible.**

If you have any questions, please call Occupational Health on 01173 423400.

Majority of appointments are carried out at the Glenside Campus or at other Occupational Health sites at Whitefriars (central Bristol), Southmead or Weston Hospitals if required.

Please bring any vaccination records you already have with you to this session. These records are held by your GP, a previous Occupational Health department or in your childhood vaccines book.

If you have received the vaccines listed in this leaflet before, please still attend the first session with your evidence so that it can be recorded by Avon Partnership Occupational Health Service (APOHS) in medical confidence.



## All Students

### MMR

The MMR vaccination is a live vaccine, containing live attenuated strains of measles, mumps and rubella viruses. It is likely you received two MMR vaccinations during childhood and documentary evidence of this will be required to ensure accurate records. Alternatively, documentary evidence of an immunity to measles, mumps and rubella by blood test will be satisfactory. If you have had only one or no MMR vaccinations, we will offer you vaccination. A course consists of two doses of MMR given one month apart.

### Varicella (chicken pox)

Varicella is a highly infectious disease. If you have had chicken pox in the past, you can be considered protected. If you have no history of the disease, or are unsure, we can check your immunity with a blood test. Most people will be immune. There is a vaccination available for those who have no immunity. This consists of a live vaccine, given in two doses one month apart.

### Hepatitis B

Hepatitis B is a blood-borne virus that can cause very significant damage to the liver. Health-care workers are at risk of infection from hepatitis B if they sustain injury from used needles in the course of their work. Hepatitis B may be transmitted in this scenario, but this may be prevented by vaccination. You will be offered a course of hepatitis B vaccination during your first session with Occupational Health, which will ensure you have a level of protection by the time your first clinical placement starts. Hepatitis B vaccine will be given in a course of three injections, with a subsequent blood test to check that you have developed satisfactory levels of immunity. You will require a fourth dose at 12 months to complete the course.

### Tuberculosis (TB)

TB is an infectious disease that usually affects the lungs, although it can affect almost any part of the body. It is caught through prolonged close contact with someone who has TB. If you have had a BCG vaccination previously, we will check you have a BCG scar (usually on your upper left arm) and this will be sufficient evidence. Questions regarding previous exposures and risk factors will also form part of the screening process. The BCG vaccination may be offered to unvaccinated students following this screening process.

If you have lived or worked in a high-risk TB incidence country you will require an IGRA blood test. This will be highlighted in the Health at Work Questionnaire you will have initially completed on the portal and will be discussed at your first vaccination appointment with us.

## Contraindications to vaccination and side-effects

MMR and Varicella are live vaccines and should not be given to those who are pregnant. If you are pregnant, you will not be able to receive these vaccines, but you must still attend your vaccination session for your vaccination history to be recorded.

Those who have conditions or take medications which cause immunosuppression should bring this to the attention of the Occupational Health staff at their appointment.

You may develop local tenderness at the site of the injection – this is a normal reaction and will settle after approximately 48 hours.

You may get a mild raised temperature after a vaccine – this is a normal reaction and will settle.

Severe reaction to a vaccine is very rare and you will be given appropriate treatment should this occur

## Midwifery and Paramedic students only

As a student Midwife or Paramedic, you will be undertaking exposure-prone procedures (EPPs). These are defined as procedures in which “there is a risk that injury to the healthcare worker may result in exposure of the patient's open tissues to the blood of the healthcare worker.”

Healthcare workers who are new to the NHS and whose role will involve EPPs are required to have a blood test to demonstrate freedom from hepatitis B, hepatitis C and HIV. You will be required to give verbal consent when you attend for your blood test. **National regulations require you to bring photographic ID (e.g. passport, driving licence or UWE Bristol ID card) in order to prove your identify at the time of giving this blood sample.**

## Midwifery students only

As a student Midwife you will require a pertussis vaccination as you will be working with pregnant women and neonates.